



STILLWATER TOWNSHIP, SUSSEX COUNTY

OPEN SPACE AND RECREATION PLAN



Contents

1. Executive Summary	4
1.1 Contents of the Plan	6
2. Introduction	7
2.1 What is Open Space?	7
2.2 Types of Open Space	8
Public Open Space	8
Private Open Space	8
2.3 History of Open Space in Stillwater	8
2.4 Public Participation and Stakeholder Feedback	8
3. Goals and Policies	10
4. Existing Community Characteristics	11
4.1 Natural Resources	11
4.2 Historic and Cultural Resources	13
5. Inventory	15
5.1 Federally-Owned Resources	15
5.2 State-Owned Resources	16
5.3 County-Owned Resources	21
5.4 Municipally-Owned Resources	21
5.5 Privately-Owned Resources	24
6. Needs Analysis	26
7. Resource Assessment	28
7.1 Lower Crandon Lake	28
7.2 Owassa Road & Mt. Benevolence Road	29
7.3 Township Community Center	30
7.4 Volunteer Field	31
8. Action Plan	32
9. Relationship to Other Plans	34
9.1 Stillwater Township Master Plan	34
9.2 State Development and Redevelopment Plan	34
9.3 Statewide Comprehensive Outdoor Recreation Plan	35
9.4 Sussex County Open Space and Recreation Plan (2016 Update)	36
9.5 Municipal Plans	36
9.5.1 Hampton Township	36
9.5.2 Walpack Township	36
9.5.3 Fredon Township	36
9.5.4 Hardwick Township	37
9.5.5 Frelinghuysen Township	37
10. Funding Sources	38

List of Figures

Figure 1. "Welcome to Historic Stillwater Township" sign on County Route 521 northbound.	4
Figure 2. Overview of Stillwater Township.....	4
Figure 3. Overview of Stillwater's preserved open space.	5
Figure 4. Benefits of Open Space.	7
Figure 5. Distribution of Land Use/Land Cover (2020)	11
Figure 6. 2020 Land Use/Land Cover Map	12
Figure 8. Context view of Tower 47/1-C in Stillwater. View looking northwest. Source: Survey Historic American Engineering Record (HAER) NJ-149.	13
Figure 9. Historic and Cultural Resources	14
Figure 10. National Park Service Parcels.....	15
Figure 11. Stated-Owned Resources	16
Figure 12. Portion of Stillwater Township Tax Map Sheet 4, showing changes to the Lower Crandon Lake parcels changed since the time of the last OSRP.	21
Figure 13. Hammond's Yellow Spring Beauty, photograph from The Native Plant Society of New Jersey.	24
Figure 14. Open Space and Recreation Resources in Stillwater Township.	25
Figure 15. Municipally-owned properties, not permanently preserved.	28
Figure 16. Municipally-owned parcels near Owassa Road and Mt. Benevolence Road.	29
Figure 17. Township Community Center.....	30
Figure 18. Volunteer Field.....	31

ACKNOWLEDGEMENTS

Mayor

Lisa Chamblings

Deputy Mayor

Vera Rumsey

Township Committee

Mayor Lisa Chamblings
Deputy Mayor Vera Rumsey
David Manser
George Scott
Dawn Delaney

Planning Board

Karen Puccio, Chair
Bob Pierce, Vice Chair
Mayor Lisa Chamblings
Dawn Delaney
Dean Voris
Amanda Kavanagh
Robert Lippencott
Jacqueline McDonough

Environmental Commission

Mandy Coriston, Chair
Jack Branagan, Vice Chair
Mayor Lisa Chamblings, Township Committee Liaison
Kathy Wunder, Secretary

Recreation Commission

Tara Tosti, Chair
Gina McCabe-Richardson, Vice Chair
Jennifer Minervino
Michael Carovillano
Heather Falotico
Traci Trotter
Kellyann DiBattista

Municipal & Professional Staff

Penny Bair, Planning Board Secretary
Kathy Wunder, Environmental Commission Secretary
Danielle Wunder, Recreation Commission Secretary
William Haggerty, Esq., Planning Board Attorney
Joe Vuich, PE, Planning Board Engineer
Alison Kopsco, PP, AICP, Senior Planner JCA
Nick Meurer, Associate Planner, JCA

Cover photos by J. Caldwell & Associates, LLC. (JCA)

The original of this report was signed and sealed in accordance with N.J.S.A. 45:14A-12.



Jessica C. Caldwell, PP, AICP, LEED-GA
New Jersey Professional Planner License #5944

1. Executive Summary

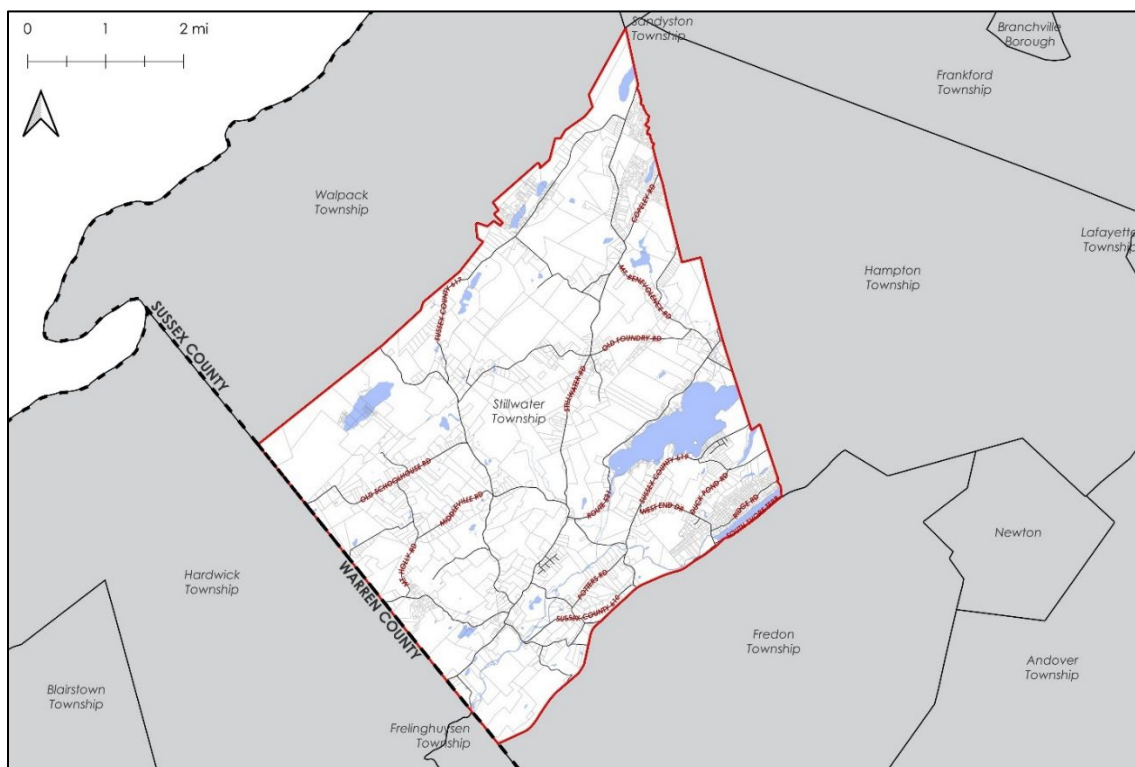
The purpose of this Open Space and Recreation Plan (OSRP) is to identify updates to Stillwater Township's Open Space and Recreation Inventory and create an action plan and recommendations to address unmet needs. This OSRP sets forth Stillwater Township's goals and objectives for open space and recreation resources and, using the updated inventory, provides a framework for achieving these goals and objectives through future preservation, improvement, and maintenance. This OSRP is prepared to be consistent with the New Jersey Department of Environmental Protection (NJDEP) Green Acres program with the intention of being utilized for County and State funding sources for open space acquisitions and/or improvements.

Stillwater Township is approximately 28.5 square miles and is located in southwestern Sussex County. The Township shares its northwestern border with Walpack Township, its northeastern border with Hampton Township, and its southeastern border with Fredon Township, all of which are also in Sussex County. Stillwater's southwestern border is shared by Hardwick Township and Frelinghuysen Township in Warren County.

Figure 1. "Welcome to Historic Stillwater Township" sign on County Route 521 northbound.

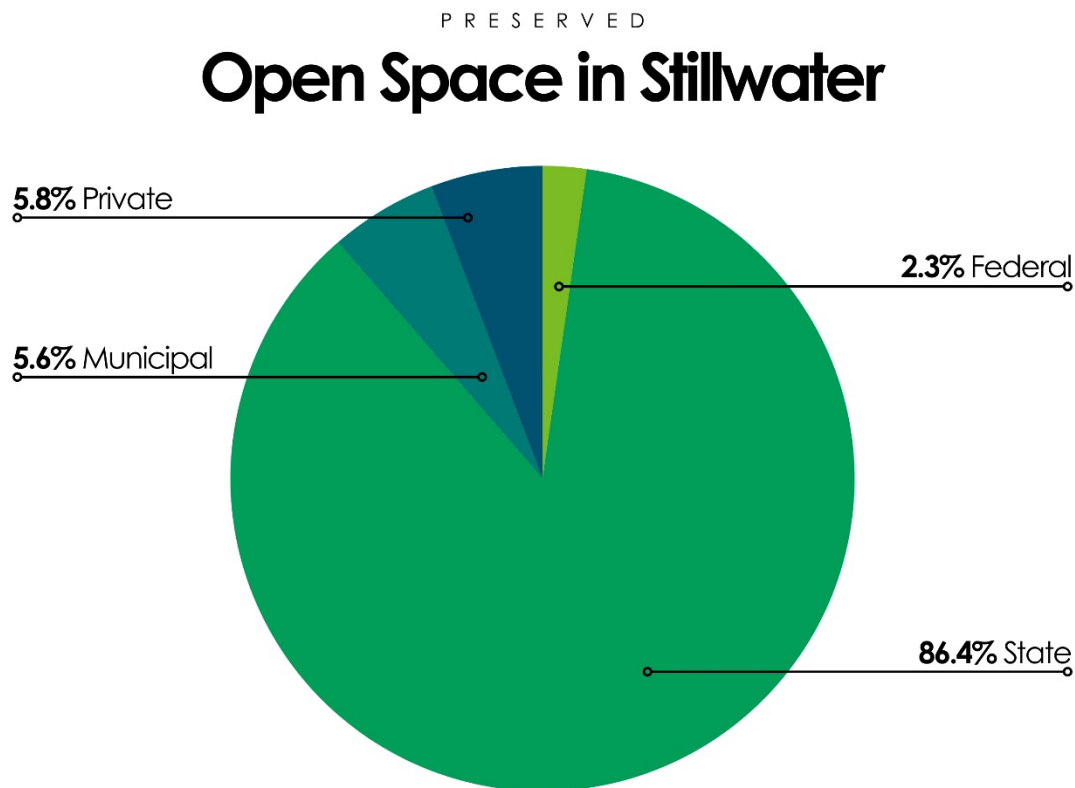


Figure 2. Overview of Stillwater Township



Open space is an invaluable resource within the Township. Of the Township's 5,399.33 acres of permanently preserved lands, which is about 30% of all land in the Township, most of these preserved lands are owned by the State of New Jersey in some capacity, specifically, the Division of Parks and Forestry and the Division of Fish and Wildlife. Some of these State-owned lands are managed by The Nature Conservancy, a nonprofit organization. The Nature Conservancy owns and manages an additional 312.95 acres (5.8%) of the preserved lands in Stillwater. The municipality owns and operates 300.83 acres (5.6%) of preserved lands. Seven (7) Natural Heritage Priority Sites are present within the Township, per the 2014/2015 Environmental Resource Inventory Update.¹

Figure 3. Overview of Stillwater's preserved open space.



Source: NJ DEP, Bureau of GIS, "State, Local, and Nonprofit Open Space of New Jersey," published August 8, 2024, updated August 13, 2024.

¹ The Township prepared an Environmental Resource Inventory (ERI) in 2014 and an Addendum to the ERI in 2015 to include data on threatened and endangered species.

1.1 Contents of the Plan

The NJDEP Green Acres Program requires that the following items are in an Open Space and Recreation Plan.

1. An **executive summary** containing a description of the Plan's origin, purpose, planning processes and findings, major goals it establishes, and actions it proposes.
2. The municipality's **goals and policies** as they relate to the philosophy of open space and recreation
3. An **inventory** of the existing public and private open space and recreation resources and opportunities, including the size, location, ownership, and usage.
4. A **needs analysis** of the adequacy of the current open space and recreation system, as documented in the inventory, to satisfy present and future needs.
5. A **resource assessment** of the lands with open space and recreation potential and interest, and the land's ability and opportunity to meet the public's needs.
6. An **action plan** to guide the orderly and coordinated execution of the Plan's goals and policies.
7. A **general open space system map** of the open space and recreation system showing the location and general configuration of all existing public and private open space and recreation resources and sites identified as having open space and recreation potential.
8. **Additional parcel data requirements** as required to maintain a statewide map of existing and planned open space.
9. A description of the **public participation** process.
10. **Adoption** of the OSRP by the Planning Board as an element of the local Master Plan.

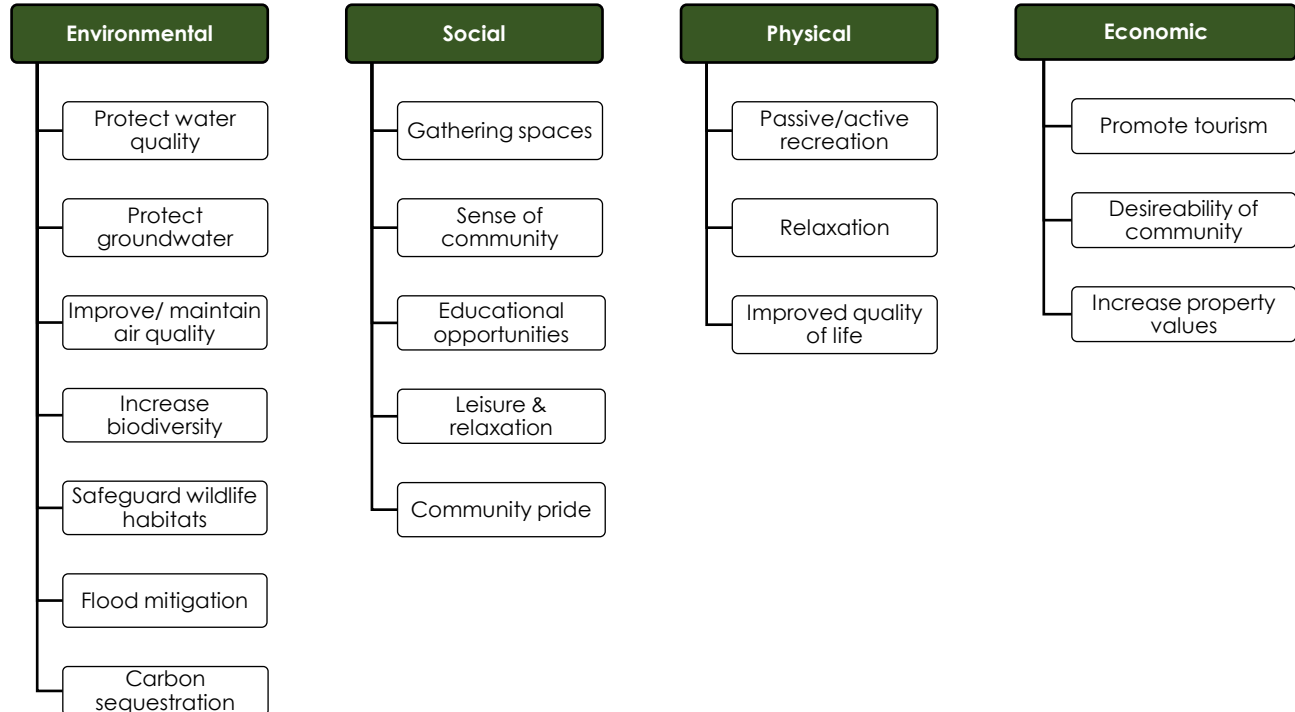
2. Introduction

2.1 What is Open Space?

Open space refers to land in urban and rural areas that is mostly or entirely undeveloped. Such spaces can include parks, agricultural lands, forests, and other natural landscapes. These areas are crucial for maintaining ecological balance and providing habitats for various species. Spaces like parks, farms, and greenways offer residents and visitors of an area respite from more heavily developed areas and provide venues for recreation, leisure, and community events. Open space plays a vital role in improving air quality, reducing the urban heat island effect, and contributing to the overall environmental health of an area.

In addition to environmental and recreational benefits, the benefits of open space extend into fostering social interactions and facilitating a strong sense of community by offering safe and appealing environments for gathering. Environmental, physical, and social health are complemented by the economic impacts of open space, including enhancing property values, attracting tourists, and fostering an environment to businesses uniquely suited to open space areas. Especially in rural areas such as Stillwater Township, open space is integral to agricultural practices and can potentially be an avenue for educating about sustainable practices.

Figure 4. Benefits of Open Space.



2.2 Types of Open Space

Open space can be publicly or privately owned and used in various ways, most commonly: trails, parks, lakes and reservoirs, historic sites, sports and recreation areas, and many others. Stillwater also contains lands preserved specifically for scientific research that are not open to the public and managed by a private entity.

PUBLIC OPEN SPACE

This is comprised of lands owned by the municipality, county, state, or federal government. These lands can include parks, trails, schools, farming, sports and recreation areas, or reservoirs. Stillwater has numerous acres of publicly accessible open space, owned and operated by varying entities including the National Parks Service, the State of New Jersey, and the Township itself.

PRIVATE OPEN SPACE

Open space can be owned by private or non-profit organizations and can include open space within a planned development, trails, camps, historic sites, lakes, and sports and recreation areas. This category includes lands that are owned by non-profit organizations and dedicated solely to research without any public access.

2.3 History of Open Space in Stillwater

On November 8, 2005, Stillwater Township's Open Space Trust Fund was established through a referendum question, creating a tax of between one-half cent and two cents per one hundred dollars of assessed property value. The Morris Land Conservancy and the Township's Open Space Advisory Committee prepared Stillwater Township's most recent Open Space and Recreation Plan in January of 2006. The 2006 OSRP was comprehensive and provides a basis on which this plan has been prepared.

2.4 Public Participation and Stakeholder Feedback

As part of the preparation of this OSRP, several meetings were held to gather feedback and provide input on the current issues and goals of the Township's open space and recreation resources.

TOWNSHIP COMMITTEE MEETING – SEPTEMBER 3, 2024

A meeting was conducted on Tuesday, September 3rd at the regularly scheduled Township Committee meeting held in the Township Municipal Building. At this meeting, the Township Committee provided insight on the goals and objectives that were listed in the 2006 Open Space and Recreation Plan, concluding that, generally, these goals remain consistent with current open space and recreation goals and objectives. Major themes that arose out of this meeting included ensuring that this OSRP update emphasizes the significance of the Township Community Center and that its utilization and upkeep is of utmost importance. The current state of existing recreation facilities — and particularly, Veterans Park — was also a major concern expressed at the meeting.

JOINT RECREATION COMMISSION & ENVIRONMENTAL COMMISSION MEETING – OCTOBER 7, 2024

On October 7, 2024, the Recreation Commission and the Environmental Commission held a joint meeting to discuss the Township's open space and recreation goals and objectives. Members of both Commissions attended and offered input on a draft map of the Township's open space and recreation resources as well as the goals and objectives. Key topics of the meeting included:

1. Connectivity – The Township has a large amount of open space that is disconnected in some locations. Notably, in the northeastern area of the Township, there is cluster of municipally-owned properties that were foreclosed on in the past and were the subject of a study to determine the best use. This cluster of properties would potentially connect several State-owned preserved open lands including the Trout Brook Wildlife Management Area and Swartswood State Park. The Crandon Lakes Beach is also in this area.
2. Trail Maintenance – Most of the Township's trails are owned and maintained by the State of New Jersey and others on municipal property are maintained by the Department of Public Works. Often times, trail users are unsure who to reach out to for maintenance purposes.

PLANNING BOARD MEETING – JANUARY 15, 2025

On January 15, 2025, a draft of this Open Space and Recreation Plan Update was presented to the Township Planning Board and the public at the regularly scheduled meeting to ensure the findings, goals, and recommendations and action items identified in the report are consistent with the Board's goals and objectives. At this meeting, the Board and the public provided feedback on several items throughout the draft OSRP.

PLANNING BOARD MEETING – MARCH 19, 2025

On March 19, 2025, this Open Space and Recreation Plan Update was presented at a public hearing to the Township Planning Board and the public at the regularly scheduled meeting. Members of the Planning Board and public were permitted to ask questions and make comments on the content, goals and objectives of the OSRP. Following the public hearing, the Planning Board adopted the plan as an element of the Township's Master Plan.

3. Goals and Policies

Stillwater Township recognizes the importance of ensuring the environmental health and quality of life for all residents, and acknowledges that open space and recreation are not just amenities, but essential components of a vibrant and thriving community. The Township seeks to foster a lifestyle that values outdoor experiences, promotes environmental protection and preservation, and embraces the community's history. The following goals and policies will guide the recommendations of this Open Space and Recreation Plan:

1. **Retain the rural and peaceful character of Stillwater;**
2. **Preserve and protect land for hunting and fishing;**
3. **Develop greenway corridors for natural resource protection and resource-recreation such as walking, hiking, fishing, and nature study;**
4. **Protect Stillwater's scenic vistas and beautiful ridgelines;**
5. **Ensure continued drinking water quality for residents;**
6. **Preserve farmland and agriculture in Stillwater;**
7. **Create and maintain a trail system for safe walking, hiking, and bicycling, with connections to existing trails;**
8. **Preserve the historic sites and landscapes in Stillwater Township;**
9. **Pursue improvements to existing recreation facilities, particularly, to the Township Community Center and Veterans Park; and**
10. **Create, improve, and expand local access, including parking facilities and ADA access, to Stillwater's public parklands.**

4. Existing Community Characteristics

Stillwater Township has a wide array of natural, historic, and cultural resources, all of which must be taken into consideration when planning for open space and recreation.

4.1 Natural Resources

The New Jersey Department of Environmental Protection (NJDEP) provides data on the land uses and land covers present throughout the State. This data is shown on **Figures 5** and **6**. Notably, the Township is 62.1 percent (11,224.21 acres) forested land. The next-largest category of land use is urban land (2,301.60 acres), which includes developed lands and a variety of uses, ranging from residential to commercial. Wetlands cover about 11.3 percent (2,042.58 acres) of the Township's total land, and agricultural uses cover 8.1 percent (1,473.42 acres). Water comprises just under six percent (1,008.79 acres) of the total area, and barren land comprises just 0.2 percent (28.98 acres).

There are several significant lakes present throughout the Township, including Fairview Lake, Swartswood Lake, Lower Crandon Lake, Lake Plymouth and Paulinskill Lake. There are approximately 62.12 miles of Category 1 (C1) waterways that traverse through the Township, including Trout Brook, Swartswood Creek, and the Paulinskill River.

Figure 5. Distribution of Land Use/Land Cover (2020)

Stillwater Township Land Use/Land Cover (2020)

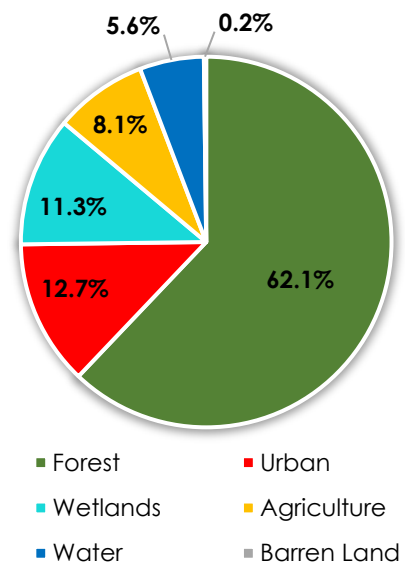
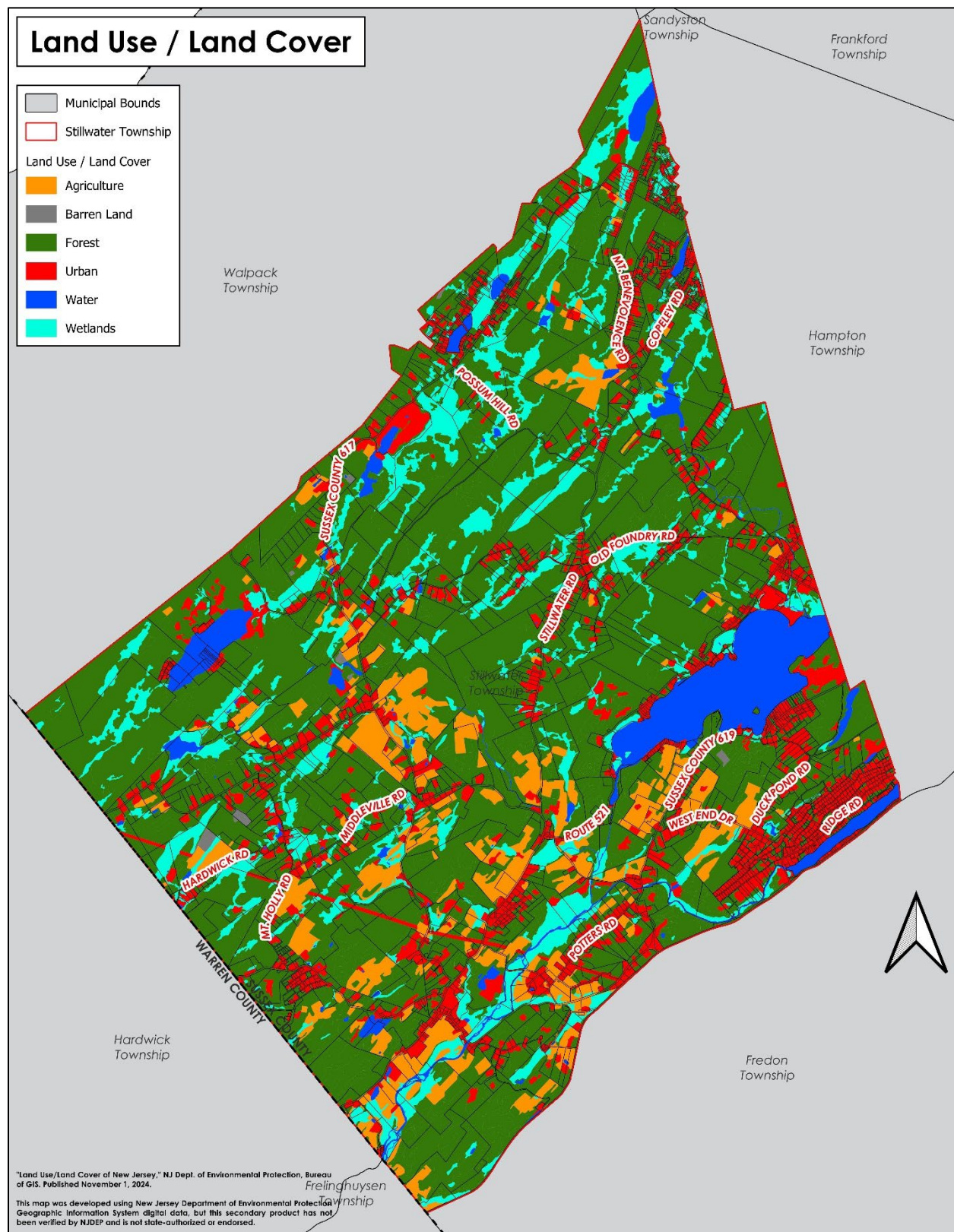


Figure 6. 2020 Land Use/Land Cover Map



4.2 Historic and Cultural Resources

The Township of Stillwater has a long history dating back to its incorporation in 1824, as described in detail in the Historic Sites Inventory dated April 1987 and prepared by Historic Preservation Alternatives, Inc. **Figure 9** on the following page gives an overview of these sites and, notably, locations where these sites overlap with various open space and recreational resources.

STILLWATER HISTORIC DISTRICT

The Stillwater Historic District, which is eligible for, but not listed in, the New Jersey and National Historic Registers, sits in the southernmost corner of the Township and spans 2,972.24 acres, or 4.64 square miles. This area is where the vast majority of the Township's historic properties are situated; these are primarily clustered around the intersection of Maple Avenue (County Route 521) and Main Street (County Route 610), and the intersection of Stillwater Station Road/East Wall Street and Fredon Road (County Route 610). The Stillwater Historic District includes portions of Swartswood State Park and preserved open space owned by The Nature Conservancy.

PENNSYLVANIA-NEW JERSEY INTERCONNECTION BUSHKILL TO ROSELAND TRANSMISSION LINE

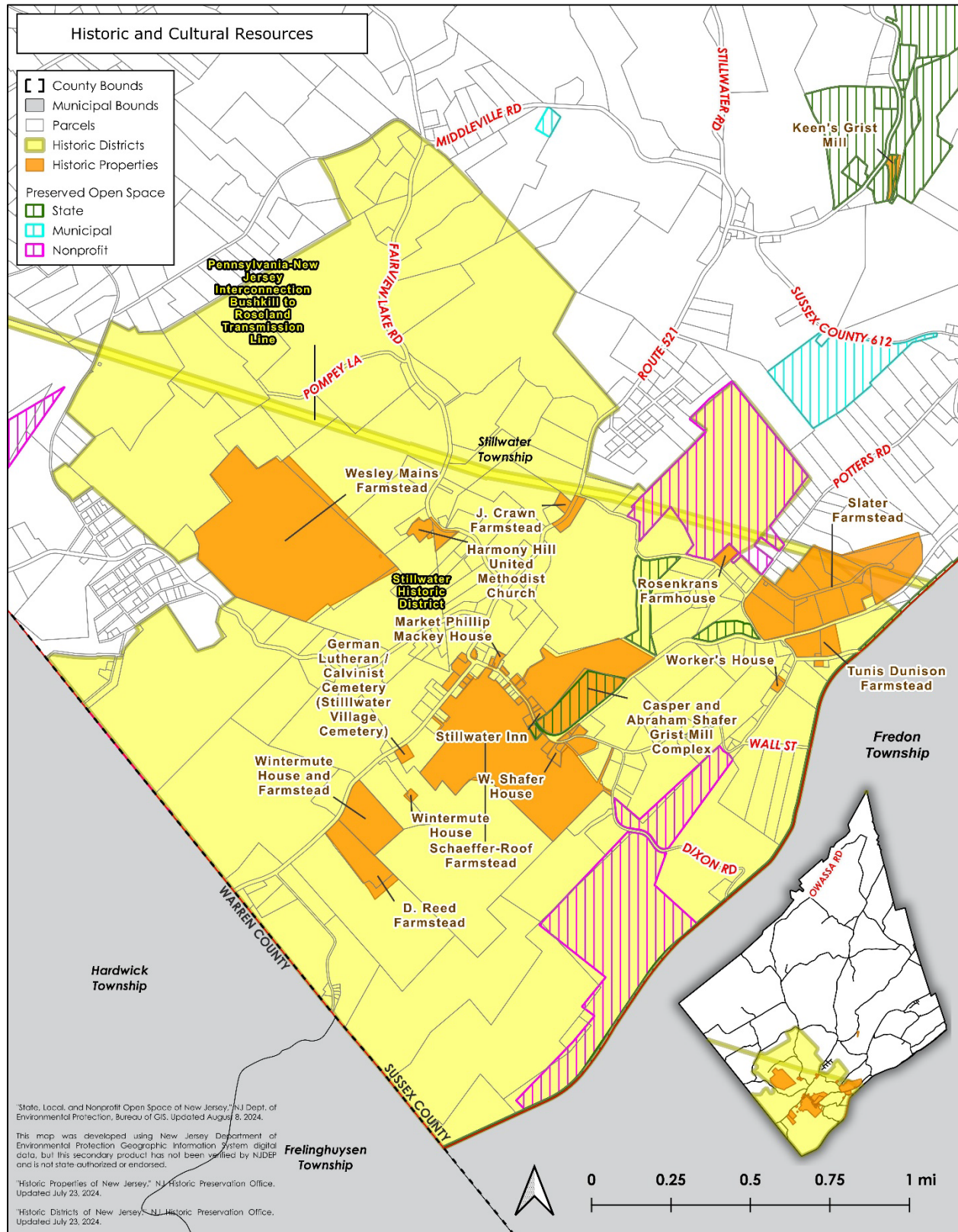
This historic transmission line that is not listed in the State or National Historic Registers spans the length of Stillwater Township from its southeastern border with Hardwick Township in Warren County to its western border shared with Fredon Township in Sussex County. Per the Historic American Engineering Record (HAER, Library of Congress), this connection, "...was a significant step in the extension of efficient and reliable electrical supply to Pennsylvania and New Jersey and balanced the service needs of the region's rural, industrial, urban, and suburban areas." Similar to the Stillwater Historic District, there are various types of preserved open space present in this area, including Swartswood State Park and Nature Conservancy lands.

Figure 7. Context view of Tower 47/1-C in Stillwater. View looking northwest. Source: Survey Historic American Engineering Record (HAER) NJ-149.



LISTED HISTORIC PROPERTIES

Two (2) properties located within Stillwater are listed in the State and National Historic Registers: Harmony Hill United Methodist Church (919 Fairview Lake Road) and the Casper and Abraham Shafer Grist Mill Complex (928 Main Street). The Grist Mill site is located within Swartswood State Park.

Figure 8. Historic and Cultural Resources

5. Inventory

5.1 Federally-Owned Resources

The National Park Service owns approximately 122 acres of land in the northwestern section of Stillwater Township. These parcels, which are all within the Delaware Water Gap National Recreation Area (NRA), are as follows:

Federally-Owned Preserved Land					
Name/Use	Location	Block	Lot	Acreage	Ownership
Delaware Water Gap NRA	Off Owassa Rd	101	1 ^A	9.68	National Park Service
Delaware Water Gap NRA	Owassa Rd	101	4.02	33.37	National Park Service
Delaware Water Gap NRA	Owassa Rd	102	1.02	14.28	National Park Service
Delaware Water Gap NRA	Plymouth Lake Dr	903	1.01	12.30 ^B	National Park Service
Delaware Water Gap NRA	Upper Dr	1001	47.02	24.17	National Park Service
Delaware Water Gap NRA	Owassa Rd	1401	26.02	3.51	National Park Service
Delaware Water Gap NRA	Owassa Rd	1401	28.02	2.57	National Park Service
Delaware Water Gap NRA	Off Owassa Rd	1401	29.01	5.20 ^C	National Park Service
Delaware Water Gap NRA	Owassa Rd	1401	30.03	17.18	National Park Service
Total				122.26^D	

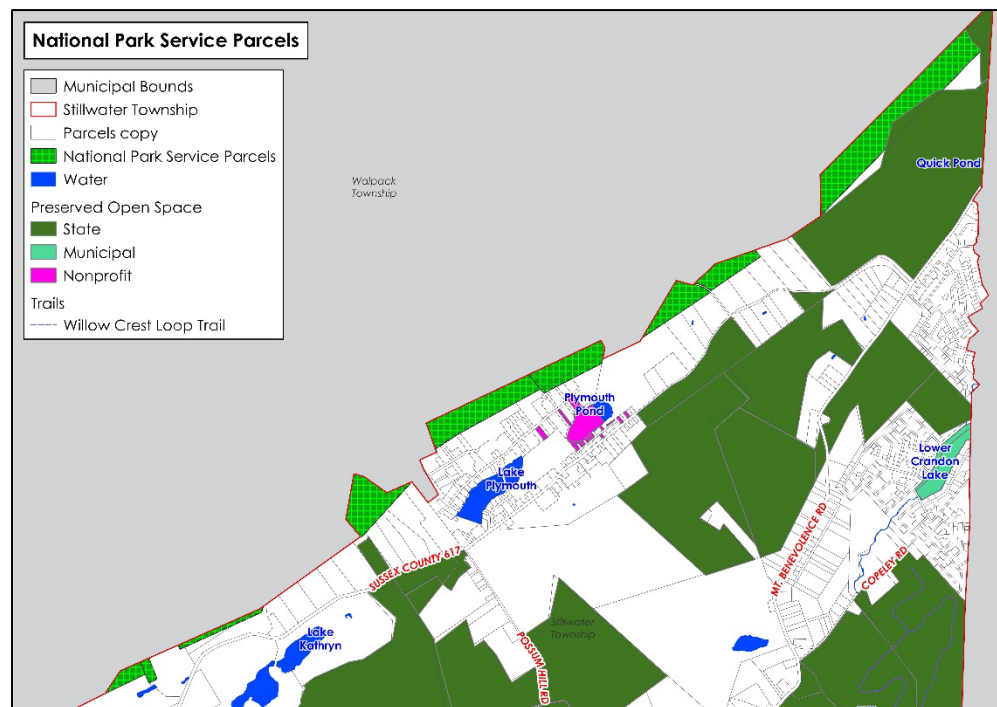
A Lot 2.02, which was identified in the 2006 OSRP, has since been merged with Lot 1.

B The 2006 OSRP listed 18.03 acres; current tax records and Tax Map Sheet 9 list 12.30 acres.

C The 2006 OSRP listed 2.59 acres; current tax records and Tax Map Sheet 14 list 5.20 acres.

D The 2006 OSRP listed Block 2601, Lot 1.02 (30 acres) as part of the Delaware Water Gap NRA, but there appears to be no such lot on Township Tax Map Sheet 26 or current tax assessment records. The 2006 Open Space Map shows what is currently Block 2601, Lot 1.01 as within the Delaware Water Gap NRA and current tax records show the owner as Bergen Council – the owners of NoBeBoSco Scout Camp in Hardwick Township to the south. This lot, however, is 76.81 acres and not 30 acres as identified in the 2006 OSRP.

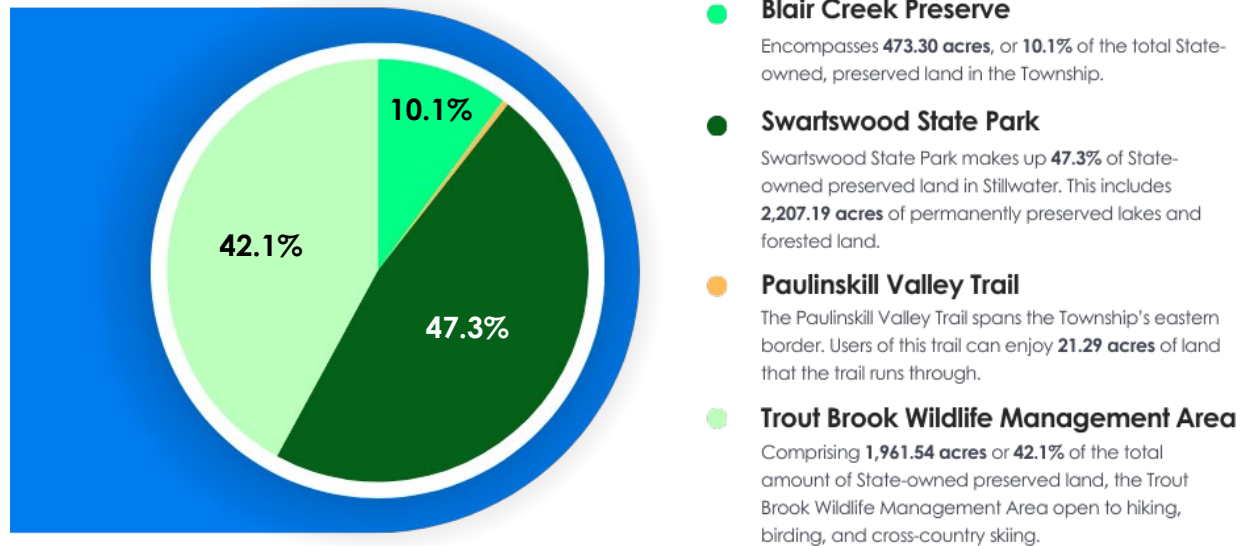
Figure 9. National Park Service Parcels



5.2 State-Owned Resources

Within Stillwater Township, there are numerous open space parcels which are owned by the State of New Jersey. The Blair Creek Preserve, Swartswood State Park, Paulinskill Valley Trail, and Trout Brook Wildlife Management Area are all significant resources within the Township.

Figure 10. Stated-Owned Resources



State-Owned Preserved Land					
Name/Use	Location	Block	Lot	Ac.	Ownership
Blair Creek Preserve	Fairview Lake Ln W	2501	12	5.14	Department of Environmental Protection; Managed by: Ridge & Valley Conservancy
Blair Creek Preserve	Fairview Lake Ln	2501	67	8.09	Department of Environmental Protection; Managed by: New Jersey Natural Lands Trust
Blair Creek Preserve	Fairview Lake Ln	2501	69	16.98	Department of Environmental Protection; Managed by: New Jersey Natural Lands Trust
Blair Creek Preserve	901 Fairview Lake Ln W	2601	2	333.40	Department of Environmental Protection; Managed by: The Nature Conservancy
Blair Creek Preserve	Old Schoolhouse Rd	2601	7.01	45.74	Department of Environmental Protection; Managed by: New Jersey Natural Lands Trust
Blair Creek Preserve	946 Old Schoolhouse Rd	2601	10	63.95	Department of Environmental Protection; Managed by: New Jersey Natural Lands Trust
Blair Creek Preserve Sub-Total				473.30	
Paulinskill Valley Trail	Off Cedar Ridge Rd	3302	22	4.77	Division of Parks and Forestry
Paulinskill Valley Trail	Off Cedar Ridge Rd	3303	5	2.14	Division of Parks and Forestry
Paulinskill Valley Trail	Off Wall St	3304	4	1.36	Division of Parks and Forestry
Paulinskill Valley Trail	Off Wall St	3503	6	3.30	Division of Parks and Forestry

Paulinskill Valley Trail	Off East Shore Dr	3805	20	3.25	Division of Parks and Forestry
Paulinskill Valley Trail	Off West End Dr	3806	2	1.32	Division of Parks and Forestry
Paulinskill Valley Trail	West End Dr	4306	1	1.00	Division of Parks and Forestry
Paulinskill Valley Trail	Off So Shore Terr	4306	2	4.15	Division of Parks and Forestry
Paulinskill Valley Trail Sub-Total				21.29	
Swartswood State Park	Mt. Benevolence Rd	701	3	66.43	Division of Parks and Forestry
Swartswood State Park	Mt. Benevolence Rd	701	4	24.07	Division of Parks and Forestry
Swartswood State Park	Hampton Rd	704	1.04	111.31	Division of Parks and Forestry
Swartswood State Park	Hampton Rd	704	3.01	106.03	Division of Parks and Forestry
Swartswood State Park	984 Mt. Benevolence Rd	704	3.02	5.20	Division of Parks and Forestry
Swartswood State Park	Mt. Benevolence Rd	704	4	106.14	Division of Parks and Forestry
Swartswood State Park	904 Old Tannery Rd	704	14	0.80	Division of Parks and Forestry
Swartswood State Park	Old Foundry Rd	1602	6.01	129.65	Division of Parks and Forestry
Swartswood State Park	Old Foundry Rd	1602	11	13.35	Division of Parks and Forestry
Swartswood State Park	928 Old Foundry Rd	1602	17	0.45	Division of Parks and Forestry
Swartswood State Park	Mt. Benevolence Rd	1602	18.01	122.89	Division of Parks and Forestry
Swartswood State Park	Mt. Benevolence Rd	1602	18.03	1.89	Division of Parks and Forestry
Swartswood State Park	Blueberry Hill Rd	1605	7	27.92	Division of Parks and Forestry
Swartswood State Park	1065 Rt 521	1702	6.01	3.25	Division of Parks and Forestry
Swartswood State Park	Rt 521	1801	2	31.95	Division of Parks and Forestry
Swartswood State Park	Rt 521	1801	3	7.50	Division of Parks and Forestry
Swartswood State Park	Rt 521	1801	4	144.70	Division of Parks and Forestry
Swartswood State Park	Lotus Terr	1801	5.01	104.96	Division of Parks and Forestry
Swartswood State Park	Rt 521	1801	6	10.00	Division of Parks and Forestry
Swartswood State Park	Rt 521	1801	9.01	24.95	Division of Parks and Forestry
Swartswood State Park	915 Old Foundry Rd	1801	20	55.20	Division of Parks and Forestry
Swartswood State Park	Old Foundry Rd	1801	23	59.54	Division of Parks and Forestry

Swartswood State Park	Off Five Points Ln	1801	34	13.35	Division of Parks and Forestry
Swartswood State Park	939 Five Points Ln	1801	39	30.70	Division of Parks and Forestry
Swartswood State Park	Anne Rd	1901	8	1.32	Division of Parks and Forestry
Swartswood State Park	910 Morningside Dr	2101	12	0.20	Division of Parks and Forestry
Swartswood State Park	Rt 521	2101	28	12.20	Division of Parks and Forestry
Swartswood State Park	Rt 521	2301	2.02	1.40	Division of Parks and Forestry
Swartswood State Park	931 Rt 521	2301	8	36.44	Division of Parks and Forestry
Swartswood State Park	Rt 521	2301	8.01	2.87	Division of Parks and Forestry
Swartswood State Park	Rt 521	2301	8.02	3.00	Division of Parks and Forestry
Swartswood State Park	932 Saddleback Rd	3306	1	4.99	Division of Parks and Forestry
Swartswood State Park	Saddleback Rd	3306	2.02	11.93	Division of Parks and Forestry
Swartswood State Park	Main St	3306	12	15.16	Division of Parks and Forestry
Swartswood State Park	940 Rt 521	3504	1	3.30	Division of Parks and Forestry
Swartswood State Park	940 Rt 521	3504	2	0.34	Division of Parks and Forestry
Swartswood State Park	Rt 521	3504	3	0.18	Division of Parks and Forestry
Swartswood State Park	Rt 521	3504	4	1.16	Division of Parks and Forestry
Swartswood State Park	Rt 521	3504	5.01	5.95	Division of Parks and Forestry
Swartswood State Park	932 Rt 521	3504	5.02	1.75	Division of Parks and Forestry
Swartswood State Park	922 Rt 521	3504	6	2.11	Division of Parks and Forestry
Swartswood State Park	Rt 619	3504	15.04	33.67	Division of Parks and Forestry
Swartswood State Park	951 Rt 619	3601	4.01	23.50	Division of Parks and Forestry
Swartswood State Park	949 Rt 619	3601	4.04	6.00	Division of Parks and Forestry
Swartswood State Park	953 Rt 619	3601	4.05	6.00	Division of Parks and Forestry
Swartswood State Park	Rt 521	3601	7	1.45	Division of Parks and Forestry
Swartswood State Park	Rt 619	3601	11.20	1.06	Division of Parks and Forestry
Swartswood State Park	Dove Island	3601	13	1.21	Division of Parks and Forestry

Swartswood State Park	1091 Rt 619	3601	14	72.00	Division of Parks and Forestry
Swartswood State Park	Rt 521	3601	23.03	4.25	Division of Parks and Forestry
Swartswood State Park	Rt 619	3601	24	518.60	Division of Parks and Forestry
Swartswood State Park	920 Emmons Ln	3602	3	0.25	Division of Parks and Forestry
Swartswood State Park	Emmons Ln	3602	5	0.35	Division of Parks and Forestry
Swartswood State Park	942 Emmons Ln	3602	14	0.57	Division of Parks and Forestry
Swartswood State Park	Emmons Ln	3602	16	0.46	Division of Parks and Forestry
Swartswood State Park	948 Emmons Ln	3602	17	0.46	Division of Parks and Forestry
Swartswood State Park	950 Emmons Ln	3602	18.01	0.29	Division of Parks and Forestry
Swartswood State Park	Emmons Ln	3602	18.02	0.09	Division of Parks and Forestry
Swartswood State Park	1029 Rt 619	3701	5	0.65	Division of Parks and Forestry
Swartswood State Park	1063 Rt 619	3701	23	0.95	Division of Parks and Forestry
Swartswood State Park	1075 Rt 619	3701	27	1.00	Division of Parks and Forestry
Swartswood State Park	1079 Rt 619	3701	28	1.05	Division of Parks and Forestry
Swartswood State Park	1081 Rt 619	3701	29	0.82	Division of Parks and Forestry
Swartswood State Park	905 North Hill Rd	3705	4	0.46	Division of Parks and Forestry
Swartswood State Park	Wood Rd	3705	14.01	2.23	Division of Parks and Forestry
Swartswood State Park	Wood Rd	3705	15	1.03	Division of Parks and Forestry
Swartswood State Park	Wood Rd	3705	16	0.54	Division of Parks and Forestry
Swartswood State Park	929 Duck Pond Rd	3802	2	52.15	Division of Parks and Forestry
Swartswood State Park	Duck Pond Rd	3803	1	71.85	Division of Parks and Forestry
Swartswood State Park	976 Rt 619	3804	1.01	93.29	Division of Parks and Forestry
Swartswood State Park	927 Duck Pond Rd	3804	10	1.49	Division of Parks and Forestry
Swartswood State Park	Dove Island Rd	3807	3	2.95	Division of Parks and Forestry
Swartswood State Park Sub-Total				2,207.19	
Trout Brook WMA	1059 Owassa Rd	101	4.01	201.68	Division of Fish and Wildlife
Trout Brook WMA	Possum Hill Rd	801	2	101.40	Division of Fish and Wildlife
Trout Brook WMA	Possum Hill Rd	801	3.02	20.12	Division of Fish and Wildlife

Trout Brook WMA	1001 Mt. Benevolence Rd	801	13	145.67	Division of Fish and Wildlife
Trout Brook WMA	Mt. Benevolence Rd	801	15	88.45	Division of Fish and Wildlife
Trout Brook WMA	Mt. Benevolence Rd	801	16	3.86	Division of Fish and Wildlife
Trout Brook WMA	Off Owassa Rd	801	24	79.47	Division of Fish and Wildlife
Trout Brook WMA	Owassa Rd	801	26	4.06	Division of Fish and Wildlife
Trout Brook WMA	Owassa Rd	801	28	28.28	Division of Fish and Wildlife
Trout Brook WMA	Owassa Rd	1401	30.09	5.97	Division of Fish and Wildlife
Trout Brook WMA	Owassa Rd	1501	1	13.00	Division of Fish and Wildlife
Trout Brook WMA	Owassa Rd	1501	2.02	6.60	Division of Fish and Wildlife
Trout Brook WMA	Owassa Rd	1501	5	45.32	Division of Fish and Wildlife
Trout Brook WMA	Owassa Rd	1501	6.01	45.61	Division of Fish and Wildlife
Trout Brook WMA	Partridge Rd	1501	18	57.54	Division of Fish and Wildlife
Trout Brook WMA	Landlocked	1501	20	26.32	Division of Fish and Wildlife
Trout Brook WMA	Owassa Rd	1501	21	174.28	Division of Fish and Wildlife
Trout Brook WMA	Partridge Rd	1501	22	17.60	Division of Fish and Wildlife
Trout Brook WMA	959 Partridge Rd	1501	23.01	71.13	Division of Fish and Wildlife
Trout Brook WMA	Possum Hill Rd	1501	33	4.00	Division of Fish and Wildlife
Trout Brook WMA	Possum Hill Rd	1502	1	91.38	Division of Fish and Wildlife
Trout Brook WMA	Possum Hill Rd	1502	2	48.10	Division of Fish and Wildlife
Trout Brook WMA	Partridge Rd	1502	3	268.90	Division of Fish and Wildlife
Trout Brook WMA	Partridge Rd	1502	4	39.85	Division of Fish and Wildlife
Trout Brook WMA	Old Foundry Rd	1601	6.01	66.93	Division of Fish and Wildlife
Trout Brook WMA	Rt 521	2401	14	114.12	Division of Fish and Wildlife
Trout Brook WMA	Fairview Lake Rd	2401	39.01	66.39	Division of Fish and Wildlife
Trout Brook WMA	Old Foundry Rd	2401	42	57.96	Division of Fish and Wildlife
Trout Brook WMA	Old Foundry Rd	2401	45	12.68	Division of Fish and Wildlife
Trout Brook WMA	Old Foundry Rd	2401	46	13.71	Division of Fish and Wildlife
Trout Brook WMA	Old Foundry Rd	2401	52.01	37.60	Division of Fish and Wildlife
Trout Brook WMA	Old Foundry Rd	2401	52.07	2.00	Division of Fish and Wildlife
Trout Brook WMA	Old Foundry Rd	2401	52.10	1.56	Division of Fish and Wildlife
Trout Brook WMA Sub-Total				1,961.54	
Total				4,663.32	

5.3 County-Owned Resources

Sussex County does not own or maintain any open space or recreation resources within Stillwater, but does own one (1) parcel at the intersection of Fredon Road (Sussex County Route 610) and East Shore Drive (Sussex County Route 619), which is used as a county garage.

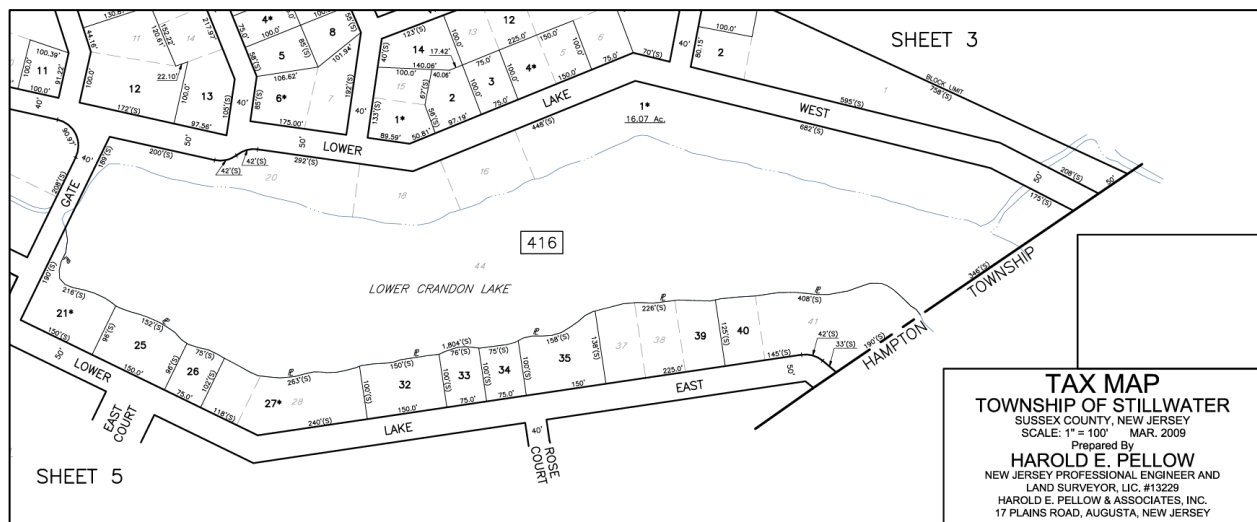
5.4 Municipally-Owned Resources

The Township of Stillwater owns several open space and recreation parcels. As of 2024, there are 300.83 acres of permanently preserved land owned by the Township. These parcels are as follows:

Municipally-Owned Preserved Land					
Name/Use	Location	Block	Lot	Acreage	Ownership
Lower Crandon Lake	Lower Lake W	416	1 ^A	16.07	Stillwater Township
Camp Towadema	Fairview Lake Rd	2501	1	163.00	Stillwater Township
Volunteer Field	919 Middleville Rd	3401	11	59.53	Stillwater Township
Veterans Memorial Park	932 Pond Brook Rd	3501	12	41.93	Stillwater Township
Stillwater Township Park	Swartwood Rd	3601	15	20.30	Stillwater Township
Total				300.83	

A Since the most recent ROSI (dated 1/14/2005) the Crandon Lakes parcels have been modified. Block 416, Lots 20 and 44, which were identified on the 2006 ROSI, merged with lots 16 and 18 and are now known collectively as Block 416, Lot 1.

Figure 11. Portion of Stillwater Township Tax Map Sheet 4, showing changes to the Lower Crandon Lake parcels changed since the time of the last OSRP.



In addition to the permanently preserved lands listed above, Stillwater Township owns 116 other parcels that are classified as 15C – Public Property. These parcels include the Township Community Center (Block 1703, Lot 21) and a large portion of land surrounding Veteran's Park (Block 3401, Lot 11).

Municipally-Owned Lands, Not Permanently Preserved								
(Property Class 15C)								
Location	Block	Lot	Ac.		Location	Block	Lot	Ac.
Timber Ln	201	11	1.46		Owassa Rd	902	16	0.12
Gate Ct	201	19	0.18		Plymouth Lake Dr E	903	7	0.38
Palmetto Tr	203	6	0.76		Plymouth Lake Dr E	903	23	0.52
Palmetto Tr	203	17	0.26		Shore Dr	903	35	0.14
Palmetto Tr	203	19	0.41		Shore Dr	903	38	0.25
Poplar Terr	301	5	0.17		913 Upper Dr	1001	5	0.41
Poplar Terr	301	7	0.78		Upper Dr	1101	42	1.27
Maple Path	301	18	0.17		Upper Dr	1101	46	0.32
Elm Lane	302	1	5.02		963 Owassa Rd	1102	3	0.23
South Gate	303	1	1.86		Upper Dr	1103	40	0.39
Spruce Tr	303	12	0.46		Plymouth Lake Dr E	1201	2	1.08
Fir Ct	305	1	0.87		918 Plymouth Lake Dr E	1201	4	0.34
Fir Ct	305	6	0.38		Owassa Rd	1201	49	0.16
Tulip Tr	305	21	0.17		Owassa Rd	1201	51	0.98
Tulip Tr	305	24	0.17		Owassa Rd	1201	58	0.16
Tulip Tr	305	26	0.17		Owassa Rd	1201	60	0.35
Tulip Tr	305	35	0.17		Owassa Rd	1201	62	0.19
Tulip Tr	305	40	0.22		Fairview Lake Rd	1401	6	0.1
Tulip Tr	308	2	1.36		Possum Hill Rd	1501	26	0.28
Tupelo Path	308	14	0.17		Sprout Hill Rd	1701	1	1.00
Tulip Tr & Tupelo Path	309	1	2.00		931 Swartswood Rd	1703	21	2.22
Tupelo Path	310	6	0.17		Anne Rd	1901	4	0.61
Tupelo Path	310	7	1.20		Anne Rd	1901	15	0.94
Pepperidge Dr	311	6	1.67		Rt 521	2001	3	0.14
Poppy Tr	401	1	0.30		Off Rt 521	2102	5	0.25
Laurel Dr	401	5	0.17		Rt 521	2201	1	0.43
Clover Dr	404	1	0.59		964 Stillwater Rd	2301	13	0.98
Azalea Path	407	1	1.71	Fairview Lake La	2501	63	0.17	
Azalea Path	407	9	0.77	Schoolhouse Ln	3004	2	0.23	
Jasmine Ln	408	8	0.69	Fredon Rd	3305	1.04	0.3	
Jasmine Ln	408	13	0.17	Twin River Dr	3306	2.99	0.79	
Lower Lake W	409	1	0.36	Wagon Wheel Ln	3502	1.97	0.08	
So Beach Tr	410	4	0.17	Wagon Wheel Ln	3502	1.98	0.41	
Lower Lake W	410	6	0.31	Wagon Wheel Ln	3502	1.99	0.35	
Fern Ct	412	4	2.50	So Shore Terr	3806	1	0.72	
Primrose Path	414	2	4.05	Cedar Dr	3902	5	0.32	

Iris Ci	415	6	0.64		Cedar Dr	3902	8	0.33
Iris Ci	415	20	1		Edgewood Dr	4001	4	0.32
Lower Lake E	416	21	0.34		East End Rd	4003	10	0.66
Baldwin Gate	501	1	0.34		East End Rd	4004	18	1.38
Baldwin Gate	501	3	0.17		Ridge Rd	4101	5	0.45
Baldwin Gate	501	4	0.33		Edgewood Dr	4102	3	0.75
Lower Lake E	501	26	0.19		Edgewood Dr	4202	8	0.03
Curving Ln	502	11	0.2		Rosewood Dr	4204	11	0.78
Backroad	503	1	1.35		Rosewood Dr	4205	1	6.84
Winding Way	503	15	0.17		Stony Road	4206	1	0.46
Winding Way	504	21	0.29		Cedar Dr	4209	9	0.5
Holly Path	505	6	1.08		Walnut Dr	4301	3	0.3
Curving Ct	505	15	0.27		West End Dr	4301	10	0.03
Curving Ct	505	18	0.2		Dogwood Terr	4301	11	0.01
Cherrywood Tr	507	1	1.41		West End Dr	4302	1	0.56
Willow Dr	508	1	1.95		1 Foot Strip	4309	6	0.02
Curving Ln	508	11	0.17		1 Foot Strip	4401	4	0.01
Willow Dr	509	1	1.3		1 Foot Strip	4402	14	0.01
Mt Benevolence Rd	601	13	0.5		1 Foot Strip	4403	23	0.06
1014 Owassa Rd	901	12	1.1		1 Foot Strip	4404	4	0.01
Owassa Rd	901	16	0.14		Walnut Dr W	4407	4	0.09
Owassa Rd	902	13	0.34		1 Foot Strip	4409	6	0.02
							Total	76.75

5.5 Privately-Owned Resources

The Nature Conservancy of New Jersey owns and manages 312.92 acres across 11 different parcels. The Arctic Meadows preserve is not open to the public; it is a wetland habitat dedicated to the protection of a rare flower that blooms only in this specific location and nowhere else in the world (Hammond's Yellow Spring Beauty, *Claytonia virginica* var. *hammondiae*, pictured right).

Figure 12. Hammond's Yellow Spring Beauty, photograph from The Native Plant Society of New Jersey.



Privately-Owned Preserved Land					
Name/Use	Location	Block	Lot	Acreage	Ownership
Arctic Meadows Preserve	Owassa Rd	902	10	0.11	The Nature Conservancy
Arctic Meadows Preserve	Plymouth Lake Dr E	903	16	1.25	The Nature Conservancy
Arctic Meadows Preserve	Plymouth Lake Dr E	903	22 ^A	9.53	The Nature Conservancy
Arctic Meadows Preserve	Plymouth Lake Dr E	903	40	0.11	The Nature Conservancy
Arctic Meadows Preserve	Owassa Rd	903	42	0.21	The Nature Conservancy
Arctic Meadows Preserve	Owassa Rd	903	45	0.20	The Nature Conservancy
Arctic Meadows Preserve	916 Plymouth Lake Dr E	1201	5	0.68	The Nature Conservancy
Arctic Meadows Preserve Sub-total				12.09	
The Nature Conservancy Open Space	Off Mt Holly Rd	2702	2	62.48	The Nature Conservancy
N/A	Cedar Ridge Rd	3302	3.01	107.07	The Nature Conservancy
N/A	Cedar Ridge Rd	3303	1.01	24.52	The Nature Conservancy
The Nature Conservancy Open Space	907 Saddleback Rd	3501	2.01	106.76	The Nature Conservancy
Other Private Sub-Total				300.83	
Total				312.92	

A Since the last ROSI, Block 903, Lots 22, 25, 26, 28, 29, 31, 32, 33, 34, and 37 were merged into Lot 22.

[illegible]

6. Needs Analysis

There is no universal approach to identifying the recreation and open space needs in a community; the analysis must be tailored specifically to the community being studied and completed with both qualitative and quantitative techniques. The public participation process associated with this plan included several meetings with the Township Committee, Planning Board, Recreation Commission, and Environmental Commission. These meetings assisted in formulating the goals and policies of this OSRP as well as identify current usage and quality of recreation facilities.

Stillwater Township has numerous existing parks and dedicated recreation areas, both active and passive. There are several baseball and softball fields, located in Stillwater Park and Veteran's Memorial Park, soccer fields at Volunteer Field and Veteran's Memorial Park, and playgrounds at Stillwater Park, Veteran's Memorial Park, and Swartwood State Park. The Township has a tennis/pickleball and basketball court at Stillwater Park.

There are a variety of weekly, monthly, and annual programs within the Township in all of its open space and recreation resources. An inventory of these opportunities is on the following page. According to input from the Recreation Commission, the Community Center is one of the most popular recreation opportunities utilized by Township residents. Events held at this facility include exercising classes, summer camp, senior events, social events, craft fairs, and educational programming.

Open Space or Recreation Resource and Location	Recreation Facilities or Activities		Other Events
Federal			
Delaware Water Gap National Recreation Area, Mullin's Road Trailhead, off Owassa Road	Camping Hiking Snowshoeing	Birdwatching	
State			
Swartswood State Park, 1091 E. Shore Drive	Bicycling Birdwatching Swimming Horseback riding Fishing Boating	Camping 65 tent & trailer sites 3 group sites 6 yurt sites Hiking 4 trails – 1 paved	
Trout Brook Wildlife Management Area, Owassa Road	Hiking Hunting	Birdwatching	
Paulinskill Valley Trail, West End Drive	Hiking Bicycling	Horseback riding	
Blair Creek Preserve, Fairview Lake Road	Hiking	Birdwatching	
Municipal			
Stillwater Township Park, 916 Swartswood Road	4 pickleball courts 1 multiuse court	Batting cage Summer camp	Movie in the Park
Stillwater Township Community Center, 931 Swartswood Road	Summer camp	Exercising classes	Scout meetings Senior events (socials, safety/education programs, game nights, exercising) Summer camp Vendor/craft fair Veteran's Day Event Social events Flu clinics
Veteran's Memorial Park (Pond Brook Park), 931 Pond Brook Road	1 playground 2 ball fields	2 all-purpose fields Covered pavilion	Stillwater Day/Fall Festival Easter egg hunt Barefoot University classes
Stillwater Township School, Fairview Lake Road	2 playgrounds	2 ball fields	
Nonprofit/Private/Other			
Arctic Meadows Preserve, Owassa Road	No public access; scientific research only		
Fairview Lake YMCA, Fairview Lake Road	Sleepaway camp	Weekend retreats Lake in the Woods YMCA Camp	Environmental education Family programs

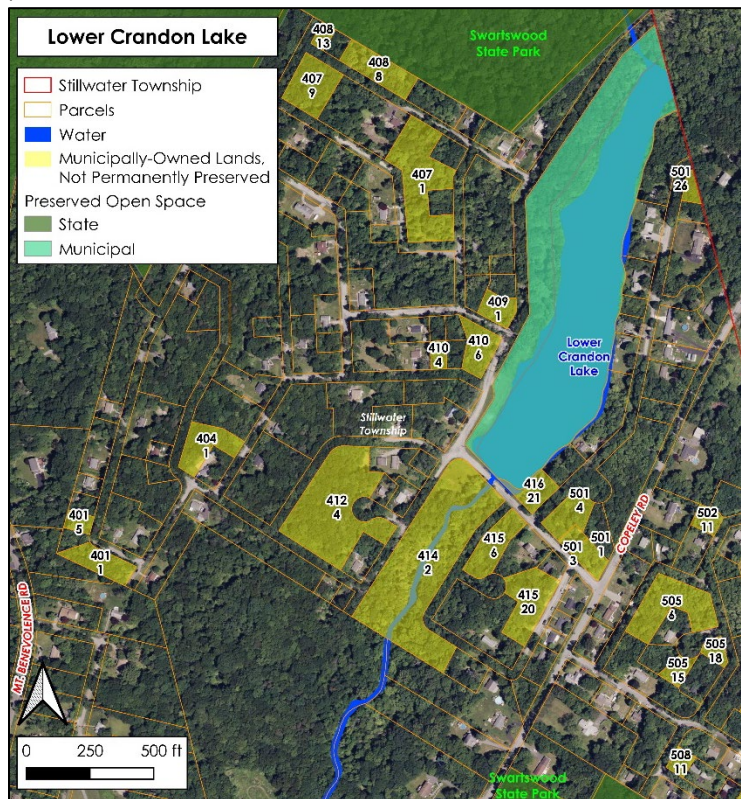
7. Resource Assessment

Stillwater owns 116 parcels that are not permanently preserved and could potentially contribute to its open space and recreation goals.

7.1 Lower Crandon Lake

Many municipally-owned parcels are scattered around the Lower Crandon Lake area of the Township. A study had been done at one point that identified the best use of these lots, but that study is outdated. Given that these parcels are situated strategically between Swartswood State Park and Lower Crandon Lake, these parcels could present the opportunity to create valuable connections between existing resources. Parcels of particular interest are listed in the table below.

Figure 14. *Municipally-owned properties, not permanently preserved.*



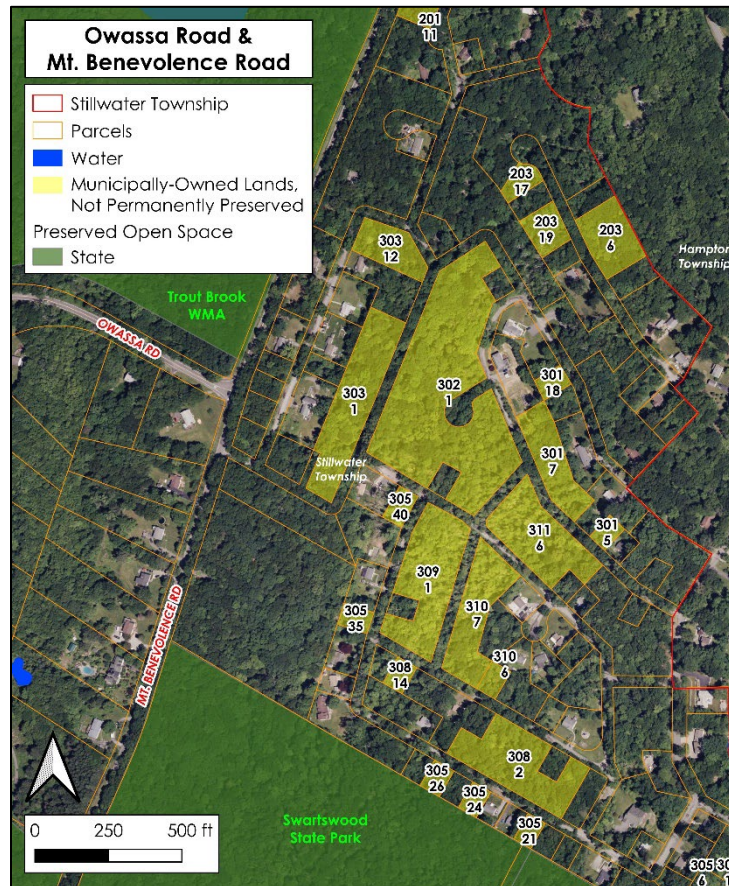
Lower Crandon Lake Parcels

Location	Block	Lot	Ac.
Lower Lake W	409	1	0.36
Lower Lake W	410	6	0.31
Azalea Path	407	1	1.71
Jasmine Ln	408	8	0.69
Primrose Path	414	2	4.05
Iris Cir	415	6	0.64
Iris Cir	415	20	1.00
Lower Lake E	416	21	0.34
Baldwin Gate	501	1	0.34
Baldwin Gate	501	3	0.17
Baldwin Gate	501	4	0.33
Total			9.94

7.2 Owassa Road & Mt. Benevolence Road

Similar to the parcels around Lower Crandon Lake, these parcels near the intersection of Owassa Road and Mt. Benevolence Road are owned by the Township and can potentially provide a connection between the Trout Brook Wildlife Management Area to the north and Swartswood State Park to the south. The eight (8) parcels of interest, identified in the table below, total 12.24 acres.

Figure 15. Municipally-owned parcels near Owassa Road and Mt. Benevolence Road.

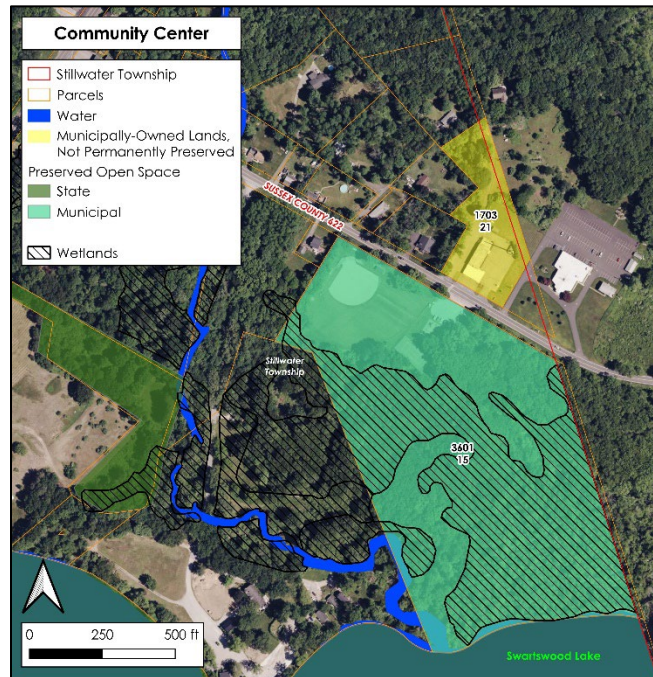


Parcels Near Intersection of Owassa Road and Mt. Benevolence Road			
Location	Block	Lot	Ac.
Elm Ln	302	1	5.02
South Gate	303	1	1.86
Spruce Tr	303	12	0.46
Tulip Tr	305	24	0.17
Tulip Tr	305	26	0.17
Tulip Tr	308	2	1.36
Tulip Tr & Tupelo Path	309	1	2.00
Tupelo Path	310	7	1.20
Total			12.24

7.3 Township Community Center

The Township Community Center on Block 1703, Lot 21 is located on the eastern border of Stillwater, bordering Hampton Township. Directly across the road from the Community Center is Stillwater Township Park (Block 3601, Lot 15), which is permanently preserved and owned by the municipality. This parcel spans 20.30 acres and is significantly constrained by wetlands, however, the area still presents an opportunity to expand the Township's recreation resources. The NJDEP allows for some development of boardwalk trails on wetlands. General Permit 17 pertains to, "...pedestrians, bicycles, and other non-motorized methods of transport" on trails no wider than six (6) feet; General Permit 17A pertains to "...non-motorized, multiple use path for use by bicycles, skate boards, rollerblades and other non-motorized methods of transport." General permit 17 has no maximum acreage for disturbance given that the land is publicly owned, but General Permit 17A permits up to one-quarter of an acre of disturbance.

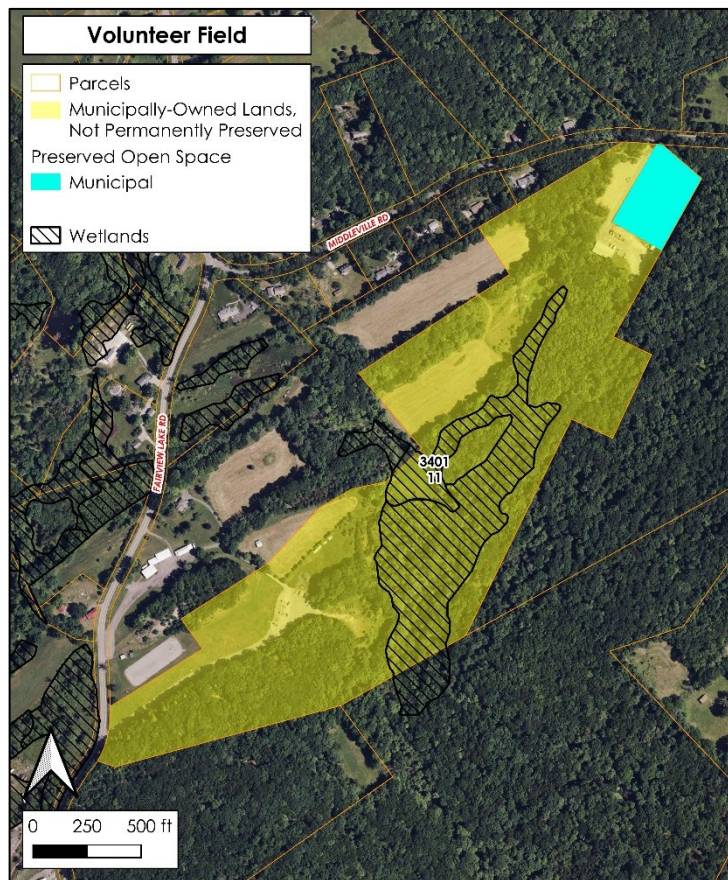
Figure 16. Township Community Center



7.4 Volunteer Field

Volunteer Field is preserved and owned by Stillwater, but the Township also owns Block 3401, Lot 11. This parcel encompasses 59.53 acres and is undeveloped. There are wetlands present on the site, but the proximity to the existing Volunteer Field may present an opportunity to create a trail utilizing NJDEP's General Permits for trails and boardwalks on wetlands.

Figure 17. Volunteer Field



8. Action Plan

This action plan for the 2025 Township of Stillwater Open Space and Recreation Plan is not intended to be a static document; it can and should be amended as desired by the Township. This action plan was designed using input from public participation meetings and various Township entities including the Township Committee, Planning Board, and Recreation Commission.

The goals and objectives of this OSRP, initially stated in Section 3 of this plan, are reiterated below.

1. Retain the rural and peaceful character of Stillwater;
2. Preserve and protect land for hunting and fishing;
3. Develop greenway corridors for natural resource protection and resource-recreation such as walking, hiking, fishing, and nature study;
4. Protect Stillwater's scenic vistas and beautiful ridgelines;
5. Ensure continued drinking water quality for residents;
6. Preserve farmland and agriculture in Stillwater;
7. Create and maintain a trail system for safe walking, hiking, and bicycling, with connections to existing trails;
8. Preserve the historic sites and landscapes in Stillwater Township;
9. Pursue improvements to existing recreation facilities, particularly, to the Township Community Center and Veteran's Memorial Park; and
10. Create, improve, and expand local access, including parking facilities and ADA access, to Stillwater's public parklands.

Action Item #1: Prioritize projects and apply for grant funding → Ongoing

Advances Goals 4, 7, 8, 9

- The Recreation Commission should take the lead role in identifying grant opportunities; however, a grant writer is recommended to assist in the preparation and submission of grants.
- Infrastructure improvements to existing recreation resources (specifically, Veteran's Memorial Field and the Township Community Center); trail amenities such as benches or trash receptacles; acquisition of open space to foster connectivity between existing recreation, natural, and historic resources.
- Grant writers or consultants can assist in the preparation of grants. Prior to the application, the Township should have a specific list of projects and anticipated cost prepared for easy reference.
- County and State grant application windows often occur at the same time every year. The Recreation Commission should prepare and maintain a list of grant opportunities and continually monitor these windows.

Action Item #2: Prepare a greenway and/or trail feasibility study → within 2-3 years

Advances Goals 1, 3, 4, 7, 9, 10

- The Township Committee, with guidance from the Planning Board, Recreational Commission, and Environmental Commission, should acquire land and access easements where necessary to create and/or expand on contiguous open and recreation resources.
- The Township already owns numerous parcels that are not preserved and are in close proximity to existing resources, especially in the northernmost area of the Township near Lower Crandon Lake. A study would provide more in-depth information on the feasibility of acquiring easements or additional properties, as well as any improvements that could be made to create trails.
- A study of this nature could be prepared by the Environmental and/or Recreation Commission and/or in collaboration with a consultant.

Action Item #3: Prepare and distribute a survey to gain additional feedback from public on how to prioritize projects → within 1-2 years

Advances Goals 1, 2, 4, 9

- The Recreation Commission should prepare a survey, which should be designed to garner feedback on specific projects and locations of interest.
- The survey will provide the most feedback if done online through Google Forms or a similar service; given the large number of seniors that utilize the Community Center, non-digital versions should be provided.

9. Relationship to Other Plans

9.1 Stillwater Township Master Plan

The Township's last comprehensive Master Plan was prepared in 1999 and reexamined in 2006, 2012, and 2022. Other components of the Master Plan that have been adopted over the years include a Stormwater Management Plan (2005), Open Space and Recreation Plan (2006), Land Use Plan (2012), Environmental Resource Inventory (2014, 2015), Housing Element and Fair Share Plan (2016). As affirmed in the 2022 Reexamination of the Master Plan, the following goals and objectives highlight the consistency of this OSRP with the Master Plan:

1. Preserve the rural character of Stillwater Township;
2. Ensure that new development is visually and functionally compatible with the physical character of the township;
3. Encourage the establishment of green areas around the historic villages to provide a hard edge in order to properly frame the existing villages
4. Protect scenic vistas, hillsides and viewsheds from incompatible development, which includes the removal of trees so that a viewshed is impaired. Viewsheds are important for the overall quality of life and sense of place they provide. The conservation of viewshed lands also helps achieve other related goals:
 - a. Conservation of open space;
 - b. Conservation of natural resources and habitats, including threatened and endangered species;
 - c. Limiting public exposure to natural or geologic hazards to development;
 - d. Parks and recreational opportunities;
 - e. Heritage resource preservation; and
 - f. Protection of water quality

9.2 State Development and Redevelopment Plan

Stillwater Township is located in the Rural (PA 4), Rural Environmentally Sensitive (PA 4B), and Environmentally Sensitive (PA 5) Planning Areas. The intents of each of those Planning Areas is as follows:

1. PA 4 – Rural Planning Area
 - a. Maintain the Environs as large contiguous areas of farmland and other lands;
 - b. Revitalize cities and towns;
 - c. Accommodate growth in Centers;
 - d. Promote a viable agricultural industry;
 - e. Protect the character of existing, stable communities; and
 - f. Confine programmed sewers and public water services to Centers.

2. PA 4B – Rural Environmentally Sensitive Planning Area
 - a. The same as its underlying Planning Area, Rural Planning Area (PA4) for existing uses of the land.
3. PA 5 – Environmentally Sensitive Planning Area
 - a. Protect environmental resources through the protection of large contiguous areas of land;
 - b. Accommodate growth in Centers;
 - c. Protect the character of existing stable communities;
 - d. Confine programmed sewers and public water services to Centers; and
 - e. Revitalize cities and towns.

The Township's own land use goals and policies, in particular those established in this Open Space and Recreation Plan, are overwhelmingly consistent with those established for each of the SDRP's Planning Areas. Conservation of open space, encouraging farmland preservation, and protecting the character of existing communities are all examples of the overlapping goals and objectives.

9.3 Statewide Comprehensive Outdoor Recreation Plan

The 2018-2022 New Jersey Statewide Comprehensive Outdoor Recreation Plan was prepared by the Green Acres Program Bureau of Planning and Information Management. Green Acres sets forth planning objectives, the following of which are of particular relevance to this OSRP:

1. To create an interconnected system of public and private lands to preserve open space and provide recreation opportunities;
2. To protect New Jersey's water resources, biodiversity, scenic landscapes and historic resources;
3. To foster partnerships with the state's local governments, conservation community and private sector, and the federal government through cooperative projects, funding, planning, and technical assistance;
4. To complement natural resource-based businesses such as tourism, agriculture, forestry, recreational and commercial fishing and outdoor recreation equipment retailing;
5. To maintain and enhance New Jersey's quality of life by providing accessible recreation, retaining community character and preserving important natural and historic resources and; and
6. To implement open space and recreation policies that are consistent with DEP goals and account for population growth and future development.

The goals and objectives of this OSRP, as well as the recommendations and action plan established in Section 8 of this plan, all promote the above planning objectives.

9.4 Sussex County Open Space and Recreation Plan (2016 Update)

Sussex County's Open Space and Recreation Plan was updated in 2016 and prepared by The Land Conservancy of New Jersey. The goals of this plan are as follows:

1. Protect the quantity and quality of water resources;
2. Secure protection of rivers, lakes, and streams;
3. Connect land for regional greenways and trail development;
4. Shape growth and maintain rural character of a community;
5. Safeguard threatened and endangered species habitats;
6. Add to publicly-owned land;
7. Preserve scenic vistas;
8. Offer opportunities for resource-based ("passive") recreation;
9. Offer opportunities for facility-based ("active") recreation;
10. Engage in land stewardship activities; and
11. Enhance land and sites with historic values.

Stillwater Township's OSRP is consistent with these County-wide goals and policies. Stillwater seeks to preserve and protect its natural resources and maintain the rural nature of the community; these goals are directly supported by the County plan.

9.5 Municipal Plans

Stillwater Township is bordered by several municipalities: Hampton Township, Walpack Township, and Fredon Township in Sussex County, and Hardwick and Frelinghuysen Township in Warren County.

9.5.1 HAMPTON TOWNSHIP

Stillwater shares its northeastern border with Hampton Township and portions of Swartswood State Park are also located within Hampton Township. Hampton Township included a Recreation and Open Space Plan in 2000 as well as its 2002 Master Plan Update; Stillwater Township OSRP is consistent with these plans.

9.5.2 WALPACK TOWNSHIP

Stillwater shares its northwestern border with Walpack Township. Walpack Township does not have an Open Space and Recreation Plan.

9.5.3 FREDON TOWNSHIP

Stillwater Township shares its southeastern border with Fredon Township. Fredon's Open Space and Recreation Plan was prepared in 2007; both municipalities share similar goals including improvements to community facilities and encouraging trail improvements and connectivity.

9.5.4 HARDWICK TOWNSHIP

Stillwater Township shares its southwestern border with Hardwick Township. The most recent update to Hardwick's OSRP was in June of 2024. This OSRP does not conflict with Hardwick's planning efforts.

9.5.5 FRELINGHUYSEN TOWNSHIP

Stillwater shares a small portion of its southern border with Frelinghuysen Township. The Land Conservancy of New Jersey most recently prepared an Open Space and Recreation Plan Update for Frelinghuysen Township in August of 2023. Frelinghuysen's goals seek to protect and connect preserved lands, improve stewardship of undeveloped public lands, and promote sustainability. Stillwater Township is similar to Frelinghuysen Township in the desire to protect the rural nature of the community, and this OSRP Update remains consistent with Frelinghuysen's OSRP.

10. Funding Sources

Local Funding Sources

1. Open Space Tax Funds. The municipality can utilize funds they have received from the local open space tax.

County Funding Sources

1. Sussex County Farmland, Recreation, and Open Space Trust Fund

State Funding Sources

1. New Jersey Green Acres Program
2. NJDCA Local Recreation and Improvement Grant
 - a. Competitive grant that can fund:
 - i. Improvements to recreational facilities;
 - ii. Improvements to outdoor recreational space;
 - iii. Equipment;
 - iv. Remediation costs associated with preparing recreation sites for use; and
 - v. Other directly related costs.
 - b. Application window generally closes at the end of January annually.
 - c. More information:
 - i. <https://www.nj.gov/dca/dlgs/programs/lriggrants.shtml>
 - ii. LRIG@dca.nj.gov